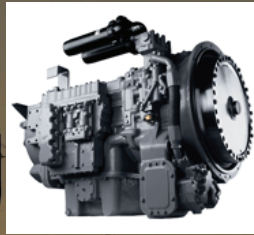




2 Remanufacturing centers Garner, NC & Cinnaminson, NJ



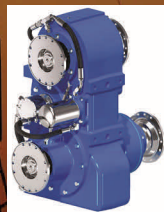
All Allison transmissions are built with genuine Allison parts by factory trained technicians. We remanufacture and test 6000, 8000 & 9000 transmissions as well as conversions to the 9823ofs spec used on Frac rigs. All are tested to factory remanufactured specs



Caterpillar TH48-E70, TH48-E80, TH55-E70 & TH55-E90 series transmissions Remanufactured using only genuine Caterpillar parts and dynamometer tested to insure OEM performance



Twin Disc 8500 series Transmissions and 23" torque converters are available in Remanufactured exchange or can be remanufactured with all genuine Twin Disc parts with factory trained technicians and dynamometer tested to OEM specifications



Both remanufactured and new Fabco units are available. Fabco transfer cases, gearboxes and steer axles are found on work over rigs, frac rigs and haul trucks.

For More Information
Visit: TRCReman.com • Email: contact@trcreman.com

For Orders, Tech Support, Core Processing, Warranty Administration
Call: 855.587.2736 • Fax: 856-528-9028
Email: trccallcenter@trcreman.com



We have the expertise and capabilities to supply remanufactured components such as transmissions, axles, clutches, transfer cases, hydraulic pumps, motors, and valves. Every component is vigorously tested and meets or exceeds OE specifications.

SPICER®



Marmon-Herrington



AxleTech®
International
A GENERAL DYNAMICS COMPANY

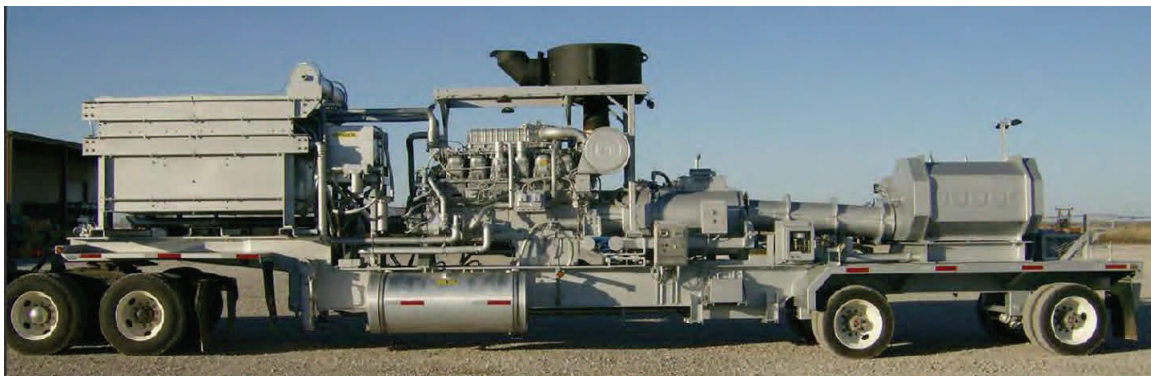
COTTA®
TRANSMISSIONS FOR INDUSTRY



EATON

It's what's inside that counts!

Components are remanufactured using only genuine OEM parts. We provide consistent performance that increases production and reduces downtime and cost. That's why you'll find our remanufactured products whenever demanding work environments call for reliable components.



For More Information
Visit: TRCReman.com • Email: contact@trcreman.com

For Orders, Tech Support, Core Processing, Warranty Administration
Call: 855.587.2736 • Fax: 856-528-9028
Email: trccallcenter@trcreman.com